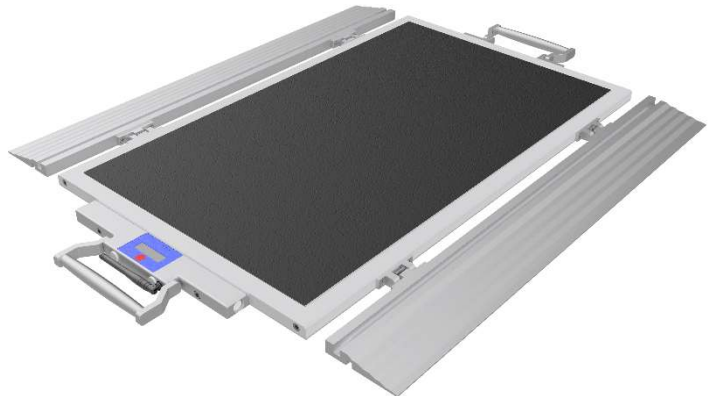


## Mobile Wheel Load Scale BFX-100-LCD-F

Determination of wheel / axle and total weight

<b>Measuring Range:</b>	0 – 10.000kg
<b>Active Weighing Area:</b>	715 x 420mm
<b>Weight:</b>	approx. 21kg
<b>Height:</b>	20mm
<b>Accuracy:</b>	< 0,5% FS
<b>Material:</b>	Aluminum



### Specification

- Digital, wireless weight pad
- Available with a digit step of d = 5kg, 10kg, 20kg
- Battery powered (power supply included)
- Large weighing area for twin wheels
- Suitable for truck and commercial weighing (Drive-on/-off ramps included)
- Fail-safe industry standard radio transmission (433MHz)
- Mobile and stationary application
- The weighing result can be read from the built-in 8-digit LCD display (with backlight)
- Radio-connected group configurable from up to 10 scales

#### Handheld Terminal (optional accessories):

The total weight of a radio-connected group can be read from the wireless hand terminal (MHT-601).

#### PC Radio Connection (optional accessories):

The weight can be transmitted wirelessly to a PC with a radio receiver (SUB-1020). With the included inno!weight® PC software, the weighing data can be displayed, further processed, saved and printed.

## Technical Data

Category	Unit	Value
Measuring Range	Nominal Load in kg	0 – 10.000
Overload Resistance	% of FS	150
Linearity Error*	% of FS	< 0,5
Repeatability*	% of FS	0,05
Operating Temperature	Degrees Celsius	-10 to +60
	Fahrenheit	14 to 140
IP Protection Class	IP	65
Power Supply	Lithium-Polymer Battery	
Power Adapter	230V AC / 5V DC (USB to 5-pin Connector)	
Data Interface	433MHz Radio, RS-485 Bus	
Usage	on flat and stable surface	
Dimensions (L x W):	mm	955 x 725
Height:	mm	20
Active Weighing Area (L x W):	mm	715 x 420

\* At optimal measuring conditions

